



## Light Measurement Report

Print date: 10/3/2025

Measurement date and time: 9/26/2025 3:37:47 PM – Measurement no. VFR-250926-0155-MS

Operator: Shawn Blaszk

### Tested Light Source

Product Name	Dram: DR-S-PC54_PC98-MTP-27-1_10V_UNV
Manufacturer	RBW
Product Description	Dram-Small-Penny Vein_Glossy White-Matte PET-2700K-1% Dimming, 0-10V Control, 120V-277V "Universal Input" (Driver External), Input Current: 300mA, Driver Model: ERP ESS015W-0300-42



### Summary of Results

Total Lumen Output	910 lm
Luminaire Efficacy	76 lm/W
Peak Intensity and Beam Angle	356 cd - 104.2°
Color Rendering TM13-18	R <sub>r</sub> 91.0 – R <sub>g</sub> 97.7
Color Shift, CIE duv	Duv 0.0010
MacAdams Steps	3
Flicker	SVM 0.48 – PstLM 0.02
Input Power, Power and Displ. Factors	12.0 W – PF 0.99 – DPF 1.0
Input RMS Voltage and Current	121 V – 0.100 A
Frequency of Input Power	60 Hz

#### Light Quality

CRI: 91.5

#### Color Temperature

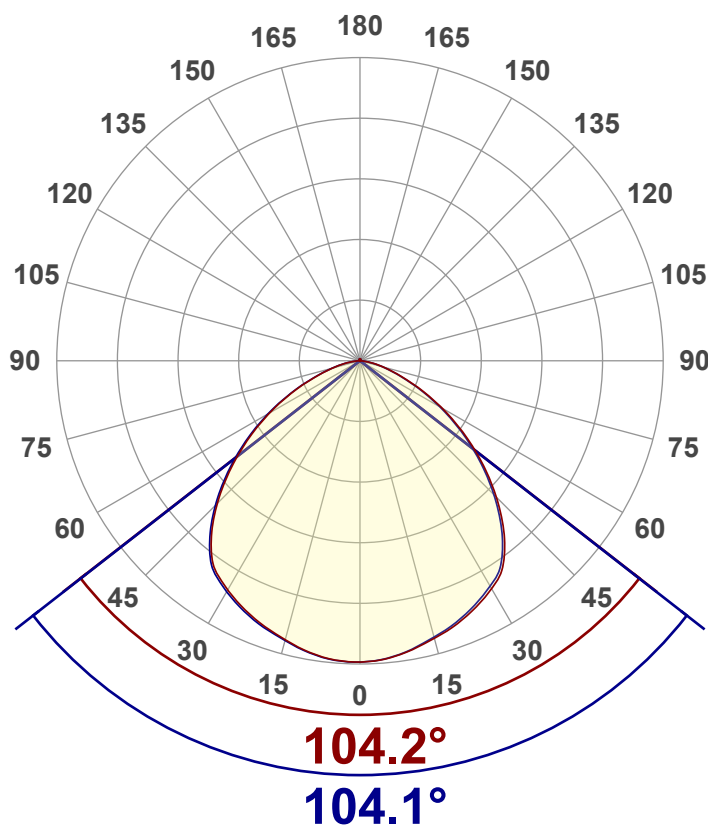
2627 K

#### Color Match

CIE1931  
x: {CIEx#}  
y: {CIEy#}

### Luminous Intensity diagram

Unit: 0-100% of peak intensity



### Main Values

Output (total Lumen)	910 lm
Lumen Up% / Down%	0.74% / 99.26%
Peak Intensity	356 cd
Beam Angle (50%-FWHM)	104.18°

### Cut-off Angle

Average 2,5%	165.8°
--------------	--------

### Field Angle

Average 10%	147.6°
-------------	--------

### Intensity Ratio

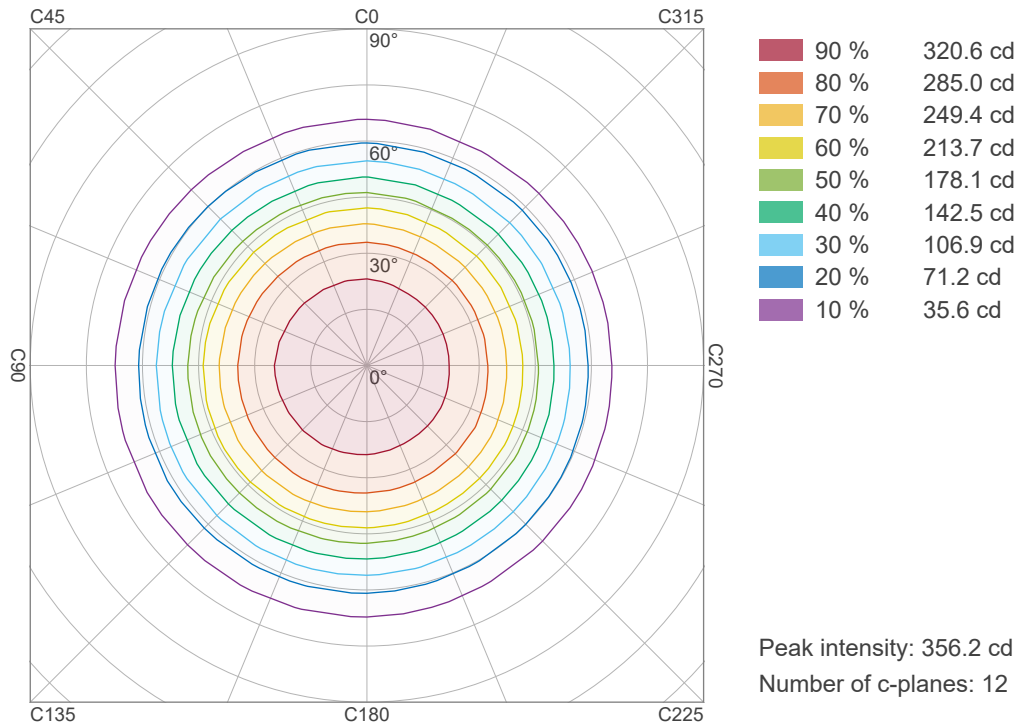
In 120° cone	85.8%
In 90° cone	61.1%

C000-C180

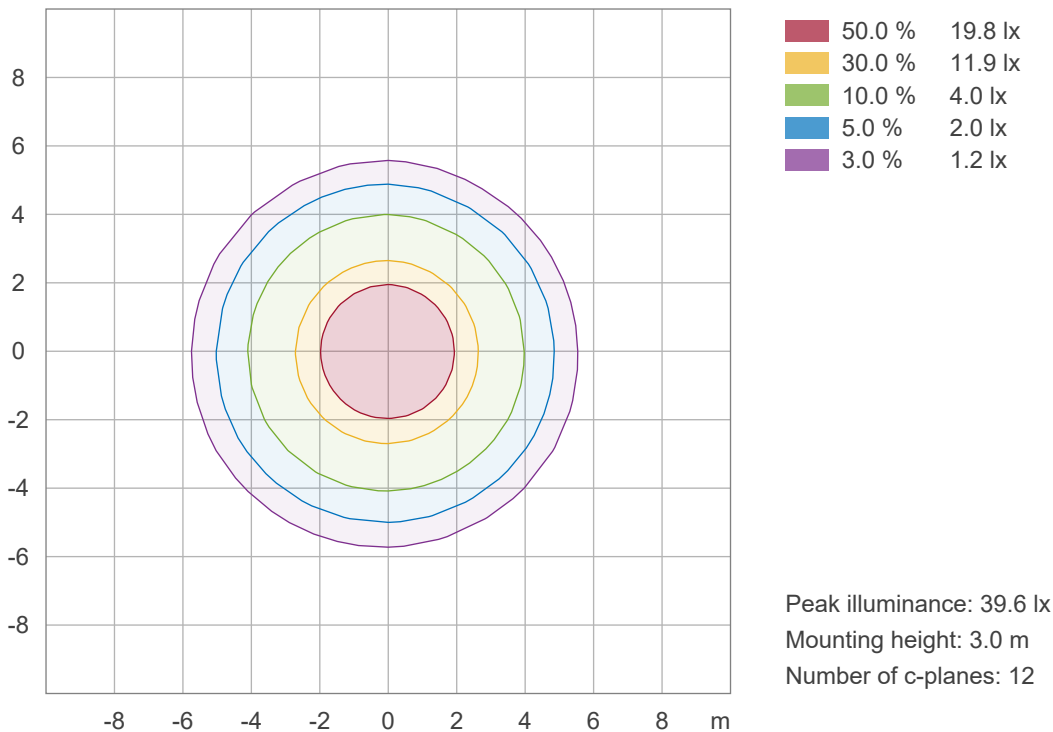
C090-C270



### Iso-intensity Diagram (Iso-candela)



### Iso-illuminance Diagram (Iso-lux)





## Light Measurement Report

Print date: 10/3/2025

Measurement date and time: 9/26/2025 3:37:47 PM – Measurement no. VFR-250926-0155-MS

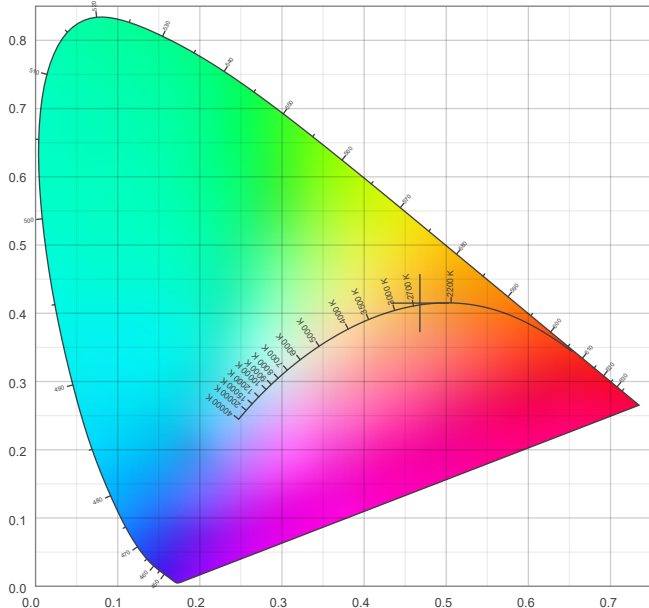
Operator: Shawn Blaszk

### Color details

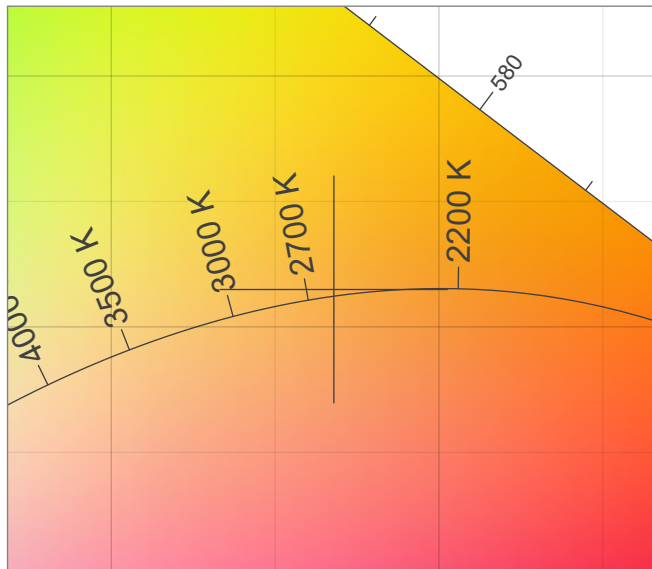
Correlated Color Temperature, Target CCT = 2627 K  
Correlated Color Temperature, Measured CCT = 2627 K  
Color Rendering Index CRI 91.5  
Color Rendering Index, R9 (red component) R9 = 49.4  
Color Rendering TM30-18 R<sub>r</sub> 91.0 – R<sub>g</sub> 97.7  
Color Quality Scale CQS = 89.5

MacAdam Steps 3  
Color coordinates CIE 1931 (x;y) = (0.468;0.415)  
Color coordinate CIEs 1960 (u;v) = (0.266;0.353)  
Color deviation from BBL Duv = 0.0010  
Color coordinate CIEs 1976 (CIELUV)(u';v') = (0.266;0.530)

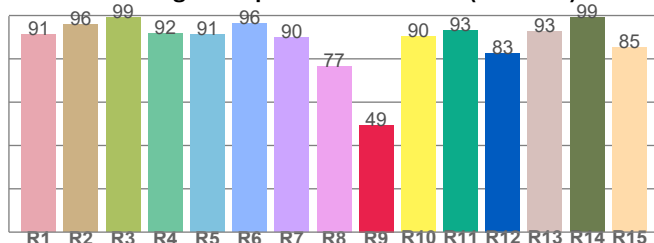
#### CIE 1931



#### CIE 1931 – zoomed on Planckian locus



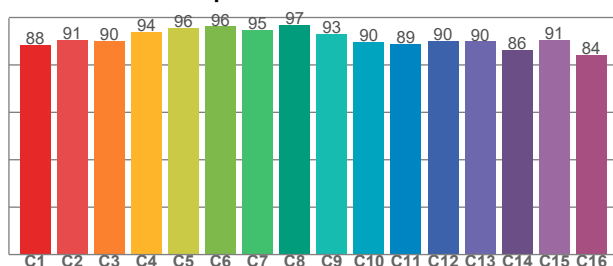
#### Color Rendering Index per reference color (CIE 1995)



CRI R values, only R1-R8 are used to calculate final CRI value

R1	R2	R3	R4	R5	R6	R7	R8	R9	R10	R11	R12	R13	R14	R15
91.3	96.0	99.2	91.6	91.2	96.3	89.8	76.6	49.4	90.2	93.2	82.7	92.6	99.1	85.3

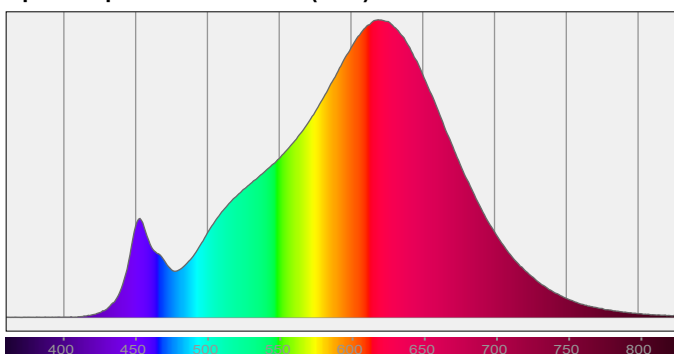
#### TM30-18 Rf-values per hue bin



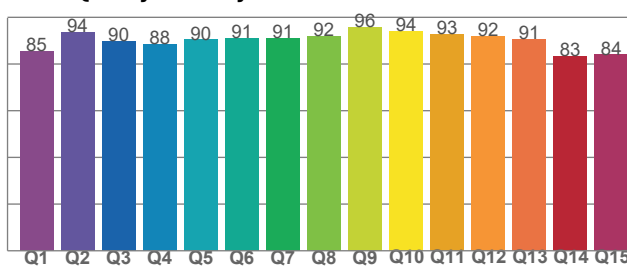
TM30 C values, 16 binned values out of total of 99 C values

C1	C2	C3	C4	C5	C6	C7	C8	C9	C10	C11	C12	C13	C14	C15	C16
88.5	90.7	90.1	93.9	95.5	96.3	94.9	96.9	93.0	89.8	88.9	90.0	89.9	86.2	90.6	84.1

#### Spectral power distribution (SPD) / W/nm – 0-100%



#### Color Quality Scale by reference color



CQS Q values

Q1	Q2	Q3	Q4	Q5	Q6	Q7	Q8	Q9	Q10	Q11	Q12	Q13	Q14	Q15
85.4	93.7	89.7	88.4	90.4	91.1	91.1	92.0	95.9	94.1	92.9	91.8	90.7	83.3	84.1

